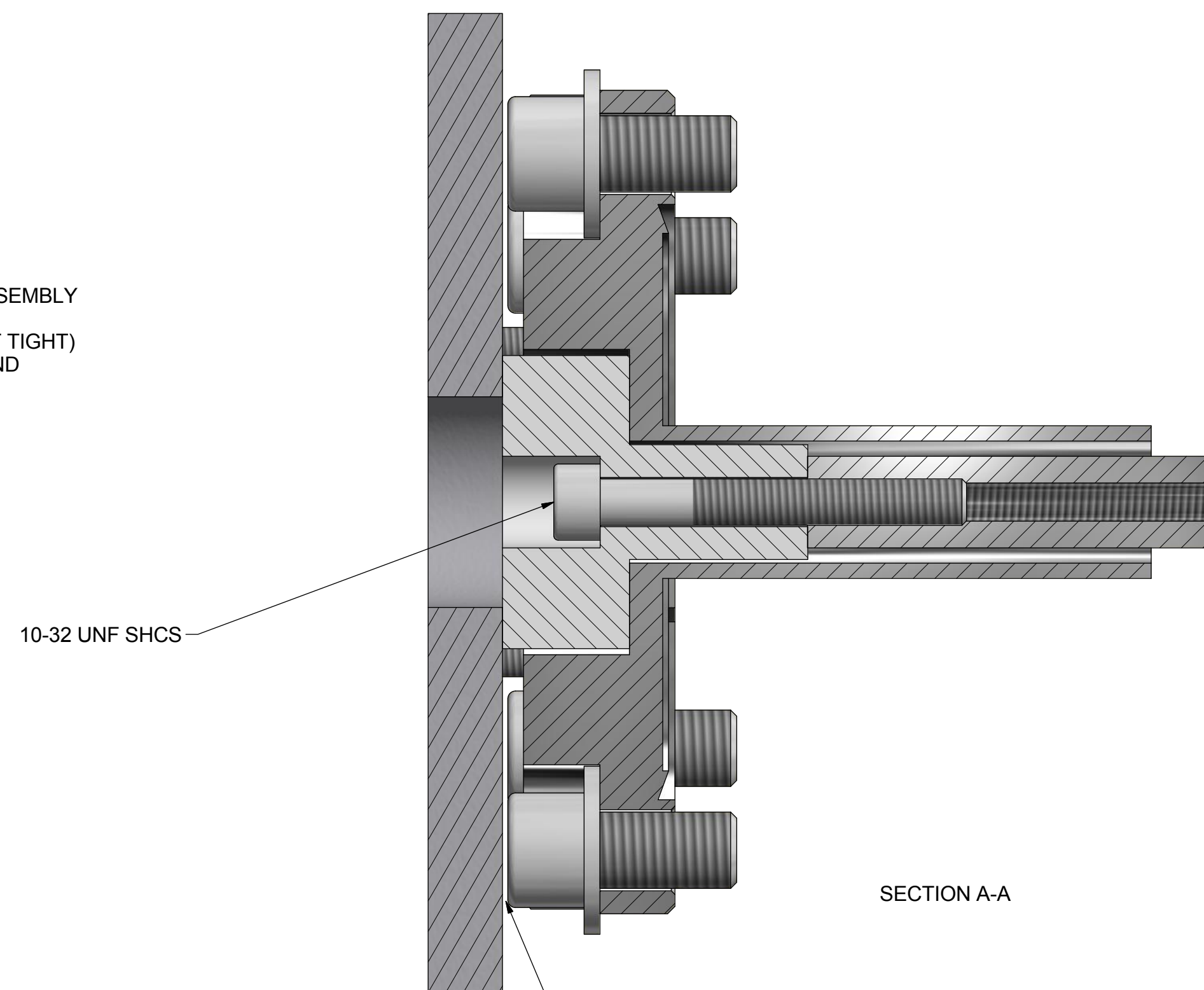


8-ID-1 ADC OVEN MODIFICATIONS
MIKE FISHER 11-6-17

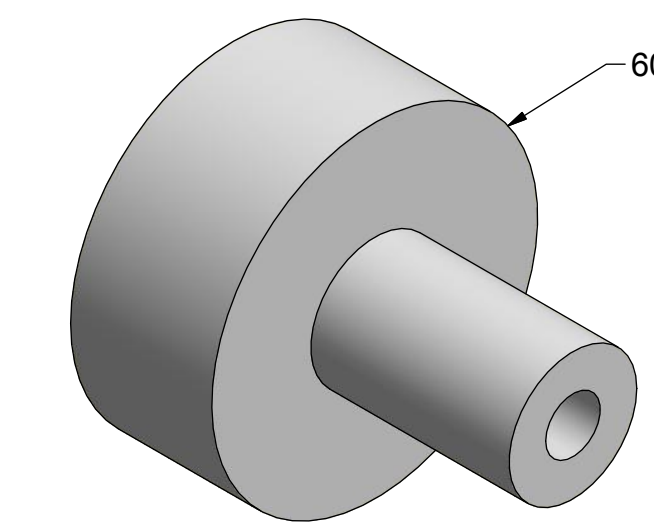
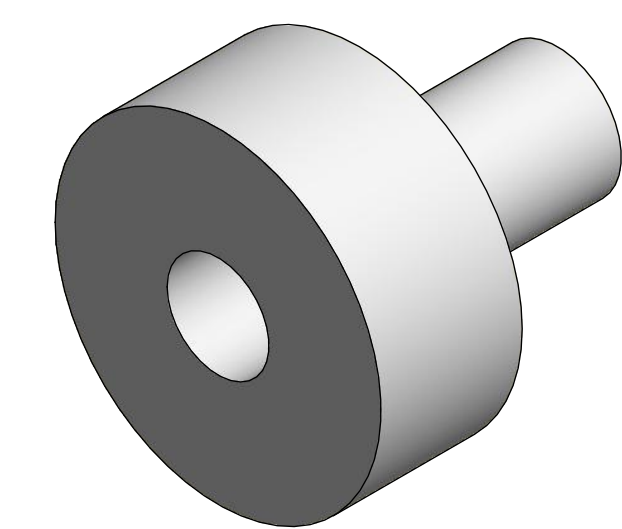
1. FABRICATED NEW ADAPTOR PIECE
2. REMOVE BOTTOM SQUARE MOUNTING PLATE
3. INSERT NEW ADAPTOR INTO CENTER BORE OF ASSEMBLY
4. INSERT NEW 1-32 SHCS INTO CENTER HOLE AND TURN SCREW UNTIL PARTS ARE SEATED (BUT NOT TIGHT)
5. REINSTALL BOTTOM SQUARE MOUNTING PLATE AND TIGHTEN 4 SCREWS.
6. FINISH TIGHTEN NEW 10-32 SHCS (NOW THAT NEW ADAPTOR IS CLAMPED AND IA NOT FREE TO ROTATE.



10-32 UNF SHCS

SECTION A-A

NOTE GAP, SCREW HEADS NO LONGER CONTACT PLATE, CONTACT IS NOW MADE BETWEEN NEW ADAPTOR AND MOUNT PLATE. TIGHTENING THE 4 SCREWS CLAMPS NEW ADAPTOR.



6061 ALUMINUM

Ø0.375 TO DEPTH SHOWN

Ø0.201 THRU

Ø1.200

Ø0.470

