
AH501B

4-Channel Bipolar Picoammeter with Bias Voltage



Elettra Sincrotrone Trieste

User's Manual



All Rights Reserved
© Elettra - Sincrotrone Trieste S.C.p.A
Rev. 1.3 – June 2019

Elettra – Sincrotrone Trieste S.C.p.A
Strada Statale 14 – km 163,5 in AREA Science Park
34149 Basovizza, Trieste ITALY
Tel. +39 040 375 8303
Fax. +39 040 9380902
www.elettra.eu

Table of Contents

| | |
|---|-----------|
| 1. INTRODUCTION..... | 8 |
| 1.1 THE AH501B PICOAMMETER | 8 |
| 1.2 THE AH501B AT A GLANCE | 9 |
| 1.3 FEATURES | 9 |
| 1.4 DATA FORMAT..... | 10 |
| 1.5 SAMPLING FREQUENCY..... | 12 |
| 1.6 OFFSET CALIBRATION..... | 14 |
| 2. SOFTWARE COMMANDS | 15 |
| 2.1 COMMAND SYNTAX | 15 |
| 2.2 LIST OF COMMANDS..... | 17 |
| 2.2.1 “ACQ” Command..... | 17 |
| 2.2.2 “BDR” Command..... | 20 |
| 2.2.3 “BIN” Command | 21 |
| 2.2.4 “CHN” Command | 22 |
| 2.2.5 “DEC” Command..... | 23 |
| 2.2.6 “GET” and “G” Commands | 24 |
| 2.2.7 “HVS” Command | 25 |
| 2.2.8 “NAQ” Commands | 26 |
| 2.2.9 “RES” Command..... | 27 |
| 2.2.10 “RNG” Command..... | 28 |
| 2.2.11 “SYN” Command..... | 29 |
| 2.2.11 “TRG” Command | 30 |
| 2.2.11 “VER” Command | 31 |
| 2.2.12 “?” Command..... | 32 |
| 2.2.13 Command Table Summary..... | 33 |
| 3. ETHERNET COMMUNICATION | 35 |
| 3.1 COMMUNICATION MODULE | 35 |
| 3.1.1 IP Address Assignment..... | 35 |
| 3.1.2 Ethernet Module Software Configuration..... | 38 |
| 4. I/O CONNECTORS..... | 42 |
| 4.1 POWER CONNECTOR | 42 |
| 4.2 I/O CONNECTORS | 42 |
| 4.2.1 The TRIGGER OUT Signal..... | 42 |
| 4.2.2 The TRIGGER/GATE Input Signal | 43 |
| 5. TECHNICAL SPECIFICATIONS | 44 |

| Document Revision | Date | Comment |
|--------------------------|-------------------------------|------------------------------|
| 1.3 | June 5 th 2019 | Formatting |
| 1.2 | May 15 th 2012 | Conversion formula corrected |
| 1.1 | December 6 th 2011 | Minor syntax corrections |
| 1.0 | April 19 th 2011 | First Release |
| 0.1 | April 10 th 2011 | Draft Release |

Safety information

Read the instruction manual carefully prior to using the instrument.
The following precautions should be strictly followed before using the AH501:

WARNING

- Do not use this product in any manner not specified by the manufacturer. The protective features of this product may be impaired if it is used in a manner not specified in this manual.
- Do not use the device if it is damaged. Inspect carefully the outer case for possible cracks or breaks before each use.
- Do not operate the device if explosive gases, vapors or excessive dust is present.
- Always use the device with its original cables.
- Power off the device before establishing any connection to/from it.
- Do not operate the device for any reason with side covers removed or loosened.
- Do not install substitute parts or perform any unauthorized modification to the product.
- Return the product to the manufacturer for service and repair to ensure that safety features are maintained

CAUTION

- This instrument is designed for indoor use and in area with low condensation.

The table below reports the general environmental requirements for the instrument:

| Environmental Conditions | Requirements |
|---------------------------------|--------------------------------|
| Operating Temperature | 0°C to 55°C |
| Operating Humidity | 20% to 85% RH (non-condensing) |
| Storage Temperature | -20°C to 70°C |
| Storage Humidity | 5% to 90% RH (non-condensing) |

1. Introduction

This chapter describes the general characteristics and main features of the AH501B picoammeter.

1.1 The AH501B Picoammeter

Sincrotrone Trieste's AH501B is a 4-channel, 24-bit resolution, wide-bandwidth, ultra-wide input dynamic range picoammeter with an integrated bias voltage source. It is composed of a specially designed transimpedance input stage for current sensing combined with analog signal conditioning and filtering stages making use of state-of-the-art electronics. This device can perform bipolar current measurements from ± 2.5 nA (with a resolution of about 300 aA) up to ± 2.5 mA (resolution of 300 pA) with sampling frequencies up to 26 kHz (for 1 channel and a 16-bit resolution) and 6.5 kHz (4 channels, 16 bit/sample). Low temperature drifts, good linearity and very low noise levels enable users to perform very high-precision current measurements. This new version has also buffered voltage monitors that are proportional to the measured input current.

The AH501B is housed in a light, robust and extremely compact metallic box that can be placed as close as possible to the current source (detector), in order to reduce cable lengths and minimize possible noise pick-up. It is specially suited for applications where multi-channel simultaneous acquisitions are required, a typical application being the currents readout from 4-quadrant photodiodes used to monitor X-ray beam displacements.

The AH501B communication is guaranteed by a standard Ethernet (TCP/IP and UDP).

1.2 The AH501B at a Glance

The AH501B and its I/Os are represented in Fig. 1:

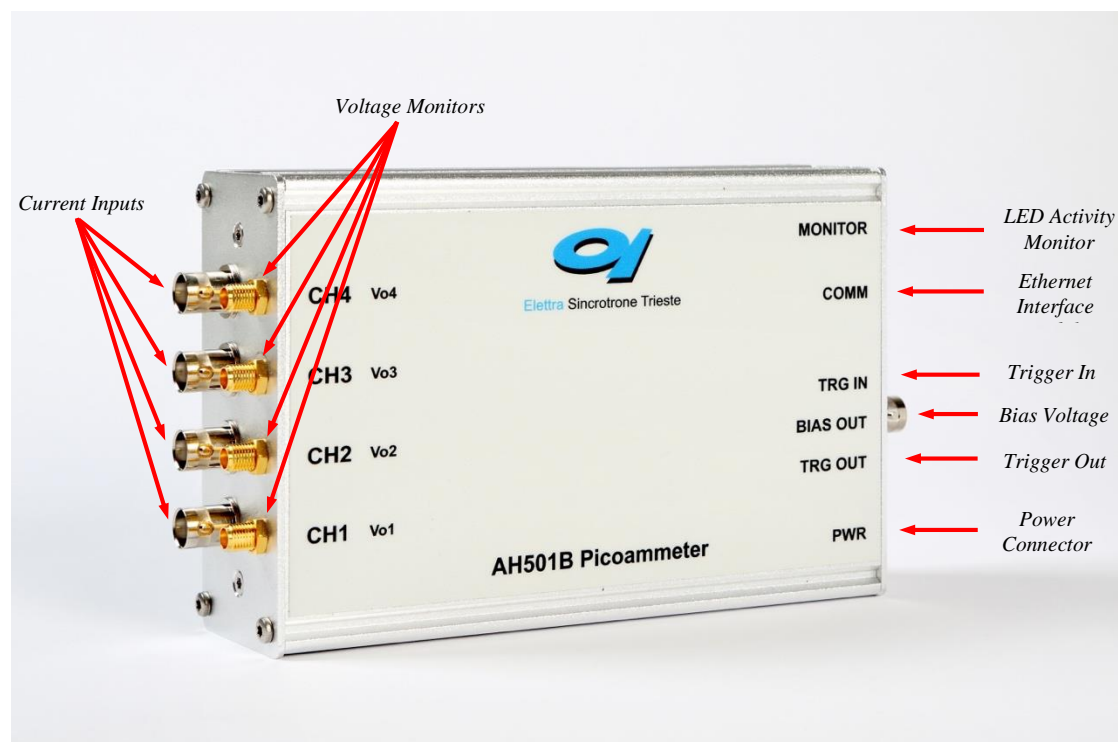


Fig. 1 - The AH501B I/O Connections

1.3 Features

The AH501B input stage is based on a multi-path inverting transimpedance amplifier (I/V converter) cascaded with signal conditioning stages.

Three measuring ranges are available as reported in the following table:

| | Full Scale |
|-------|-------------------------------|
| RNG 0 | $\pm 2.5 \text{ mA}$ |
| RNG 1 | $\pm 2.5 \text{ }\mu\text{A}$ |
| RNG 2 | $\pm 2.5 \text{ nA}$ |

The gain values for these three input ranges are:

| | Transimpedance (V/A) |
|-------|-------------------------|
| RNG 0 | -10^3 |
| RNG 1 | -10^6 |
| RNG 2 | -10^9 |

The maximum and minimum currents that can be measured with the AH501B are reported, along with the LSB resolution for each range, in the following table:

| | Full Scale | Resolution @16 bit | Resolution @24 bit |
|-------------|------------|-----------------------|-----------------------|
| RNG0 | ±2.5 mA | 76 nA | 298 nA |
| RNG1 | ±2.5 µA | 76 pA | 298 fA |
| RNG2 | ±2.5 nA | 76 fA | 298 aA |

A host PC is necessary in order to operate the AH501B and properly set/check the desired parameters (i.e. range and resolution bits) and to acquire the converted data. Please refer to the “Software Commands” chapter for a complete description of available commands, their purposes and their syntax.

1.4 Data Format

Since the AH501B has three different input gain values and two possible resolution modes (16- and 24-bit), output values depend on the selected configuration. For this reason it is important to properly set the gain value in order to avoid input stage saturation and corresponding data clipping of the output values (to 8388608 or to 8388607 in 24-bit resolution mode and to 32768 or to 32767 in 16-bit resolution mode).

Moreover it is very important to perform an offset calibration procedure before using the picoammeter. In the following table the correspondence between the read value and the full scale range is reported:

| Data Value | Hex Value | Input Signal |
|--------------|-----------|--------------|
| 32768 | 0x8000 | +Full Scale |
| 0 | 0x0000 | 0 |
| 32767 | 0x7FFF | -Full Scale |

Data value in 16-bit resolution mode

| Data Value | Hex Value | Input Signal |
|----------------|------------|--------------|
| 8388608 | 0x800000 | +Full Scale |
| 0 | 0x000000 | 0 |
| 8388607 | 0x7FFFFFFF | -Full Scale |

Data value in 24-bit resolution mode

The data read from the AH501B are the raw values of the A/D converter, thus the data conversion from the read values to the corresponding current values must be performed by the user applying the following formula for the 16-bit resolution mode:

$$I_{IN} = \begin{cases} +\frac{FSR}{65535} \cdot Value & \text{if } Value \leq 32767 \\ -\frac{FSR}{65535} \cdot (65535 - Value) & \text{if } Value \geq 32768 \end{cases}$$

and the following one when working in 24-bit resolution mode:

$$I_{IN} = \begin{cases} +\frac{FSR}{16777215} \cdot Value & \text{if } Value \leq 8388607 \\ -\frac{FSR}{16777215} \cdot (16777215 - Value) & \text{if } Value \geq 8388608 \end{cases}$$

where:

- I_{IN} : the calculated input current;
- FSR : the selected Full Scale Range;
- $Value$: the raw data value from the AH501B;

Examples:

16-bit @ RNG = ±2.5 mA

$$I_{IN} = \begin{cases} +\frac{5mA}{65535} \cdot 32767 = +2.5mA & \text{if } Value \leq 32767 \\ -\frac{5mA}{65535} \cdot (65535 - 32768) = -2.5mA & \text{if } Value \geq 32768 \end{cases}$$

24-bit @ RNG = ±2.5 nA

$$I_{IN} = \begin{cases} +\frac{5nA}{16777215} \cdot 8388607 = +2.5nA & \text{if } Value \leq 8388607 \\ -\frac{5nA}{16777215} \cdot (16777215 - 8388608) = -2.5nA & \text{if } Value \geq 8388608 \end{cases}$$

1.5 Sampling Frequency

The AH501B sampling frequency depends either on resolution, data stream format and number of channels (please refer to “List of Commands” chapter to see how to set these values). When receiving a non-formatted binary data stream, the sampling periods for each channel are represented in the following table:

| | 16-bit Resolution | 24-bit Resolution |
|------------|-------------------|-------------------|
| 1 Channel | 38.4 μ s | 38.4 μ s |
| 2 Channels | 76.8 μ s | 153.6 μ s |
| 4 Channels | 153.6 μ s | 307.2 μ s |

Sampling period when receiving raw binary data

corresponding to the following sampling frequencies:

| | 16-bit Resolution | 24-bit Resolution |
|------------|-------------------|-------------------|
| 1 Channel | 26.042 kHz | 13.021 kHz |
| 2 Channels | 13.021 kHz | 6.510 kHz |
| 4 Channels | 6.510 kHz | 3.255 kHz |

Sampling frequencies when receiving raw binary data

The sampling periods dilate when working with ASCII data values (that require computational time to be formatted) reaching the values here listed:

| | 16-bit Resolution | 24-bit Resolution |
|------------|-------------------|-------------------|
| 1 Channel | 384 μ s | 499.2 μ s |
| 2 Channels | 806.4 μ s | 998.4 μ s |
| 4 Channels | 1.6128 ms | 1.9968 ms |

Sampling frequencies when receiving ASCII-formatted data

The corresponding sampling frequencies for each channel in this mode are then:

| | 16-bit Resolution | 24-bit Resolution |
|------------|-------------------|-------------------|
| 1 Channel | 2.604 kHz | 2.003 kHz |
| 2 Channels | 1.240 kHz | 1.002 kHz |
| 4 Channels | 620.0 Hz | 500.8 Hz |

Sampling frequencies when receiving ASCII-formatted data

Adding the offset binary two's complement correction ("DEC ON" command, see section 2.2.5 for additional information), the sampling periods become:

| | 16-bit Resolution | 24-bit Resolution |
|------------|-------------------|-------------------|
| 1 Channel | 422.4 μ s | 537.6 μ s |
| 2 Channels | 844.8 μ s | 1.0752 ms |
| 4 Channels | 1.6896 ms | 2.1504 ms |

Sampling periods when receiving ASCII-formatted data with offset binary 2's complement correction

and the sampling frequencies the following ones:

| | 16-bit Resolution | 24-bit Resolution |
|------------|-------------------|-------------------|
| 1 Channel | 2.367 kHz | 1.860 kHz |
| 2 Channels | 1.184 kHz | 930.1 Hz |
| 4 Channels | 591.9 Hz | 465.0 Hz |

Sampling frequencies when receiving ASCII-formatted data with offset binary 2's complement correction

1.6 Offset Calibration

Due to the internal bias and offset voltages of its electronic components, an offset calibration (to eliminate the equivalent input offset current) must be performed on each AH501B module. If a precise estimation of this offset is necessary, the following procedure must be performed:

- Install on each input connector (SMA or BNC) a shielding cap in order to avoid noise pick-up (be aware that the central input pin must be left open and shielded but not grounded otherwise the read values are meaningless);
- Switch on the AH501B;
- Let it warm up for about half an hour;
- Acquire a set of data (for example 10000 pts.) from each input channel and calculate the mean value;
- Repeat the previous step for each gain range (RNG 0, RNG 1 and RNG 2).

The calculated mean values are the new Data Offsets that must be taken into account in the evaluation of the current measurement that must be applied for each channel. It may be preferable to calculate this offset as the median of collected data to avoid errors caused by unwanted rectified impulsive noise.

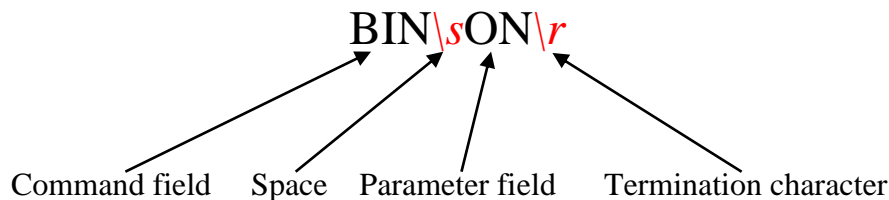
2. Software Commands

This chapter describes the software commands used for tuning and readout of the AH501 picoammeter.

2.1 Command Syntax

The command syntax used by the AH501 protocol is described in the following paragraphs.

Commands must be sent in ASCII format and are composed by two fields, the “command field” and the “parameter field”, separated by a space (`'s'` or 0x20 in hexadecimal notation). Instructions are not case sensitive and therefore the command string can freely use either uppercase or lowercase characters. Each instruction is terminated with a “carriage return” character (`'r'` or 0x0D), e.g.:

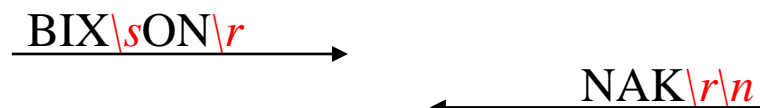


There are two types of software commands: “configuration commands” and “query commands”. The “query commands” usually have the same “command field” as the “configuration commands” and a “?” in the “parameter field”.

The AH501B, after each received command, replies with a string whose content depends on the type of command sent and its correctness.

There are three possible scenarios (with some exceptions, as described in the corresponding command paragraph):

1) *the command syntax is incorrect*: the AH501B will always answer with the string “NAK” terminated with “carriage return/line feed” characters (`'r'n'` or 0x0A0x0D in hexadecimal notation), e.g.:



example 2:

BIN\sOOG\r → ← NAK\r\n

2) *the command syntax is correct and it is a “configuration command”*: the AH501B will answer with the string “ACK” terminated with “carriage return/line feed” (`\r\n`) characters, e.g.:

BIN\sON\r → ← ACK\r\n

example 2:

RES\s24\r → ← ACK\r\n

3) *the command syntax is correct and it is a “query command”*: the AH501B will answer with the echo of the “command field” and the value of the requested parameter separated with a space and terminated with “carriage return/line feed” (`\r\n`) characters, e.g.:

BIN\s?\r → ← BIN\sON\r\n

example 2:

RES\s?\r → ← RES\s24\r\n

2.2 List of Commands

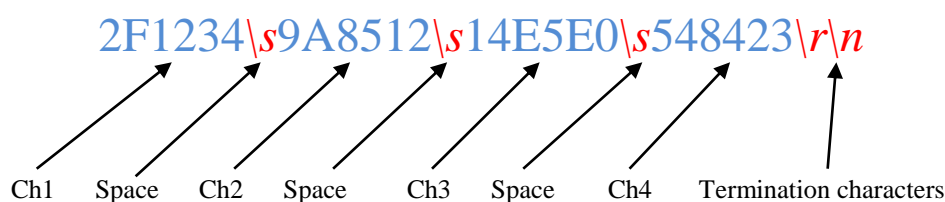
Please find hereafter the command list used by the AH501B and the corresponding syntax, the description of each command purpose and any special requirements relating to specific commands.

2.2.1 “ACQ” Command

The purpose of the ACQ command is to start/stop the acquisition from the AH501. The instrument starts to acquire data as soon as the command is received and immediately sends the generated digital data stream to the host PC.

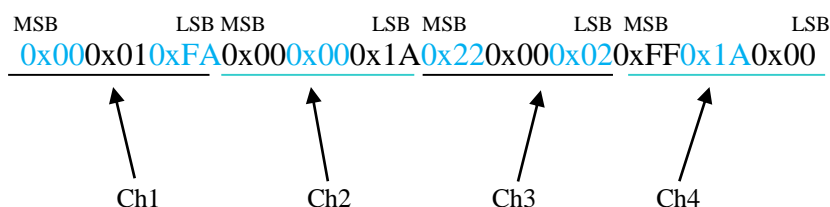
At power-up the instrument boots with the acquisition stopped (*default*), the user is required to start the data acquisition sending the “ACQ ON” command.

The type of transmitted data depends on the setting of the “binary mode” and can be changed using the “BIN” command (see “BIN Command” paragraph). With “BIN OFF”, data is sent in ASCII mode with the format “ch1 ch2 ch3 ch4\r\n”, with a space between each channel value:

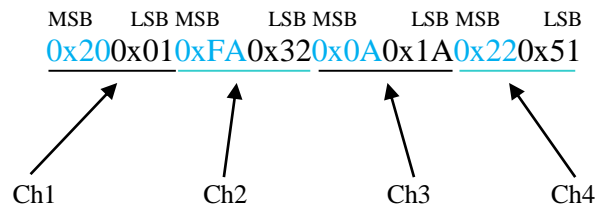


With “BIN ON” (*default*) digital values are transmitted as a continuous binary data stream without any termination or control character. For this reason it is important to keep synchronization with the data flux, otherwise it is possible, if some bytes are missed, to corrupt the data and to get false readings from the instrument. If this happens, acquisition must be stopped with the “S” (without carriage return) command and then restarted, increasing the reliability of the communication channel. The speed of data transmission is directly related to the number of active read channels and the resolution of data samples.

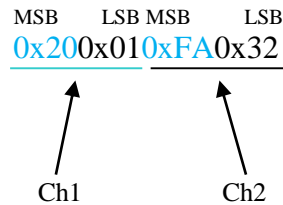
In binary mode, 4 channels and a 24-bit resolution the data output format consists of a continuous sequence of 12 bytes (96-bit packet), three bytes for each channel since each channel sample is 24-bit wide, MSB first:



In binary mode, with 4 active channels and a 16-bit resolution, the data output format consists of a continuous sequence of 8 bytes, two bytes for each channel, MSB first:



In binary mode, with only 1 active channel and a 24-bit resolution, the data output format consists of a continuous sequence of 6 bytes (48-bit packet):



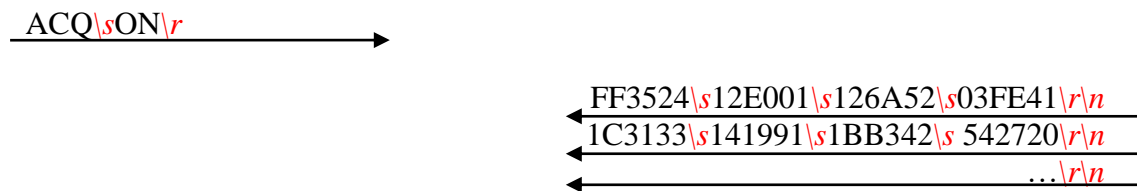
Please note that no acknowledgement string is sent back to the host after an “ACQ ON” command while an “ACK” command is returned after the acquisition is stopped (with “S” command).

Data-packet sizes, which also define the maximum data rates, are listed in the following table:

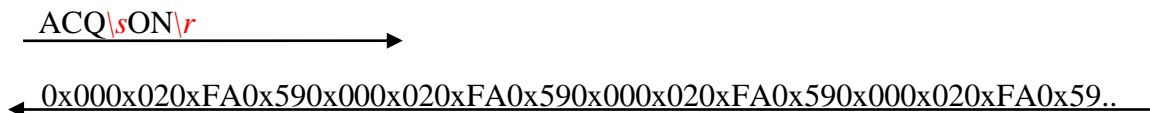
| | 16-bit Resolution | 24-bit Resolution |
|------------|-------------------|-------------------|
| 1 Channel | 2 bytes | 3 bytes |
| 2 Channels | 4 bytes | 6 bytes |
| 4 Channels | 8 bytes | 12 bytes |

Examples

ACQ ON example with ASCII data:



ACQ ON example with BINARY data:



S example with ASCII data:

← *...|r|n*
← *1F3321\s42E203\s321B22\s03BE43|r|n*
← *13312A\s132951\s1BB342\s112721|r|n*

S
→
S example with BINARY data:

...0x000x020xFA0x590x000x020xFA0x590x000x020xFA0x590x000x020xFA0x5
9
←
S →

ACQ ? example:

ACQ\s?|r →

← *ACQ\sOFF|r|n*

2.2.2 “BDR” Command

The purpose of the BDR command is to set the baudrate between the AH501B and the communication module. The following table shows the allowed baudrates:

| Command | Baudrate |
|-------------------|----------|
| BDR 921600 | 921600 |
| BDR 460800 | 460800 |
| BDR 230400 | 230400 |
| BDR 115200 | 115200 |
| BDR 57600 | 57600 |
| BDR 38400 | 38400 |
| BDR 19200 | 19200 |
| BDR 9600 | 9600 |

Since the instrument changes the baudrate right after the BDR command is accepted and the acknowledgement string (ACK) is sent back to the host. The user can verify successful execution of the command sending another command after changing the host baudrate (e.g.: “BDR ?”).

The baudrate change procedure strictly depends on the communication interface module used. Please refer to the “Communication Module Interfaces” chapter for more information.

By default the instrument boots with a 921600 baudrate setting.

Examples

BDR example with incorrect parameter:

BDR\s960000\r → ← NAK\r\n

BDR example with correct parameter:

BDR\s9600\r → ← ACK\r\n

Acknowledgement from the AH501 before the change of baudrate.

BDR ? example:

BDR\s?\r → ← BDR\s921600\r\n

2.2.4 “CHN” Command

The purpose of the CHN command is to set the number of active input channels to be sampled; the AH501B provides the capability to simultaneously sample 1, 2 or 4 channels.

Channels on which sampling is performed are indicated in the following table (default power-up value is CHN 4):

| | Sampled Channels |
|----------|------------------------|
| CHN\s1\r | Ch.1 |
| CHN\s2\r | Ch.1, Ch.2 |
| CHN\s4\r | Ch.1, Ch.2, Ch.3, Ch.4 |

The overall sampling frequency of the system is determined by the value set with this command.

Examples

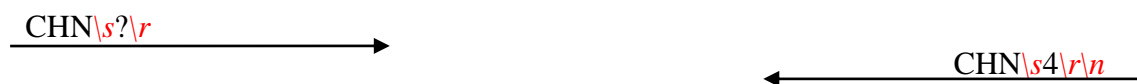
CHN example:



CHN example with incorrect parameter:



CHN ? example:



2.2.5 “DEC” Command

The DEC command can only be used when working in BIN OFF mode, i.e. data is transmitted as ASCII characters, and is a function that, if enabled, performs the two's complement offset correction directly on the AH501B processor.

If this offset correction is enabled, data values are sent in the usual “ch1 ch2 ch3 ch4\r\n” format with a hexadecimal representation:

003234\sF18512\s51EC07\s66A60A\r\n

when working in 24-bit resolution mode (data width is 6-byte/sample)

0032\sF185\s51EC\s66A6\r\n

when working in 16-bit resolution mode (data width is 4-byte/sample)

This feature is disabled (“DEC OFF”) at device power-up.

Examples

DEC example:

DEC\sON\r → ← ACK\r\n

DEC ? example:

DEC\s?\r → ← DEC\sON\r\n

2.2.6 “GET” and “G” Commands

The purpose of the GET command is to read back a single snapshot of the values for the active channels. The “G” command is a useful shortcut fully equivalent to the “GET ?” command and it is implemented to further reduce delays caused by data transmission and handling. The format of the returned values depends on the “binary mode” setting (refer to “BIN Command” paragraph), the resolution settings and the active channels settings.

Examples

GET ? example with ASCII data:

```
GET\s?\r → 448231\s4A3567\s9EE803\s711996\r\n ←
```

G example with ASCII data:

```
G\r → 448231\s4A3567\s9EE803\s711996\r\n ←
```

GET ? example with binary data:

```
GET\s?\r → 0x000x020xFA0x590x000x020xFA0x590x000x020xFA0x590x000x020xFA0x59 ←
```

? example with binary data:

```
G\r → 0x000x020xFA0x590x000x020xFA0x590x000x020xFA0x590x000x020xFA0x59 ←
```


2.2.7 “HVS” Command

The HVS command let the users set and read the Bias Voltage output status/value. It is necessary to enable the bias voltage circuitry first in order to set a voltage value, i.e. send the command “HVS ON”. The red LED on the AH501B side panel should turn on. The command “HVS OFF” disables the bias voltage output, putting it in a high impedance state.

The voltage value (up to 30V) can be set by sending a “HVS xx.xx” command to the AH501B, where xx.xx is the desired voltage value in Volts. It is also possible to check the bias voltage circuitry status by sending a “HVS ?” command.

Examples

HVS ? example:

HVS\s?\r → ← HVS OFF\r\n

HVS ON example:

HVS\sON\r → ← ACK\r\n

HVS “value” example:

HVS\s19.22\r → ← ACK\r\n

? HVS ? example:

HVS\s?\r → ← HVS 19.22\r\n

2.2.10 “RNG” Command

The purpose of the RNG command is to set the gain and therefore the full scale range of the AH501B. The parameter field is a number representing the selected gain range as reported in the following table:

| | Full Scale | Resolution (@ 24-bit) |
|--------------|------------|--------------------------|
| RNG 0 | ±2.5 mA | 298 nA |
| RNG 1 | ±2.5 µA | 298 fA |
| RNG 2 | ±2.5 nA | 298 aA |

The parameter value can be set from 0 to 2; at power-up the AH501B range is set to its lowest gain value (0, *default*) in order to avoid possible damages to the device in case some of its inputs are connected to a high current source/sink at start-up.

Examples

RNG example for a ±2.5nA Full Scale Range:

RNG\s2\r → ← ACK\r\n

RNG example for a ±2.5mA Full Scale Range:

RNG\s0\r → ← ACK\r\n

RNG ? example:

RNG\s?\r → ← RNG\s0\r\n

2.2.11 “SYN” Command

The purpose of the SYN command is to synchronize the four on-board analog to digital converters. The task performed by this command is automatically executed at device power-up and shall not be performed again when using the AH501B device. This is a command to be used only for debugging purposes.

2.2.12 “TRG” Command

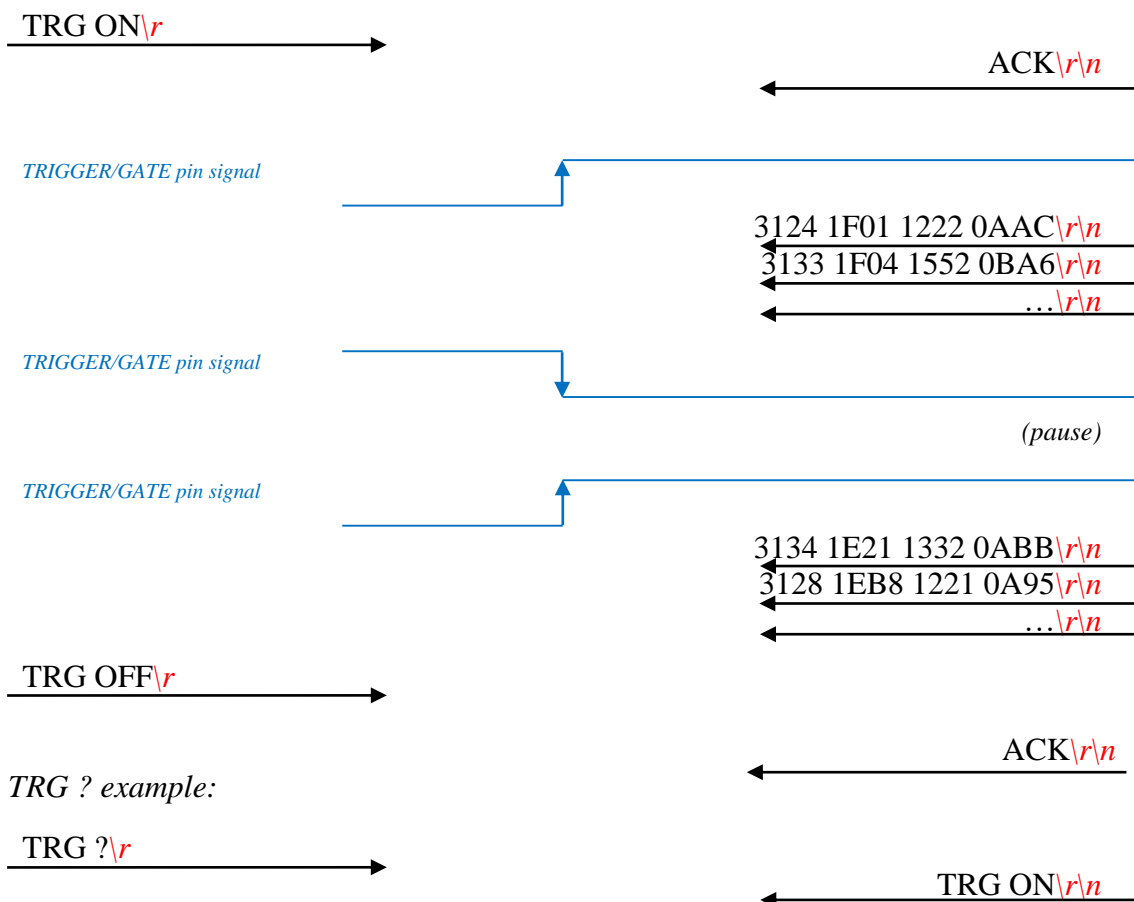
The purpose of the TRG command is to enable/disable the “trigger/gate input” of the AH501B. This feature, when enabled (TRG ON), is useful when the picoammeter data acquisition must be synchronized to an external event (for instance laser pulses).

The “trigger mode” operation is described hereafter. As soon as the TRG ON command is received the AH501B stops the acquisition and waits to receive, on the corresponding TRIGGER/GATE pin (see “I/O Connectors” chapter), a trailing edge signal transition. As soon as this is detected, the AH501B starts to acquire data and to continuously send them to the host; data are sent to the host as long as the TRIGGER/GATE signal is kept in high state. As soon as a falling edge signal transition (i.e. signal goes to low level state) is encountered, the acquisition stops and no more data are sent to the host. This behavior continues whether until the “trigger mode” is disabled with the “TRG OFF” (*default*) command (see “TRIGGER/GATE Signal” paragraph in the “I/O Connectors” chapter) or the driving signal is kept at low level.

Please note that an acknowledgement string is sent back to the host after a “TRG ON” or “TRG OFF” command. The format of the data sent depends on the “BIN”, “CHN”, “RES” and “DEC” settings previously configured for the picoammeter. Activating the “trigger mode” (“TRG ON”) while the trigger/gate input pin on the I/O connector is not driven has no effects.

Examples

TRG example with ASCII data:



2.2.11 “VER” Command

The purpose of the VER command is to report the firmware version currently flashed into the AH501B on-board processor.

Examples

VER ? example:

VER\s?\r →

← VER\sAH501\sv.1.0\r\n

2.2.12 “?” Command

The “?” command generates a reply that contains the device *on-line help*: the purpose is to give users important information about the AH501B features, data formats and some data stream examples. The use of this command is very useful when using the picoammeter in a text Winsock-based application (such as HyperTerminal) without being able to access the device user's manual.

2.2.13 Command Table Summary

| Command | Purposes | Parameters | Power-Up default value |
|---------|--|------------------|------------------------|
| ACQ | Start continuous acquisition | ON | |
| | Query acquisition status | ? | |
| BDR | Set baudrate | 921600 | <i>default</i> |
| | Set baudrate | 460800 | |
| | Set baudrate | 230400 | |
| | Set baudrate | 115200 | |
| | Set baudrate | 57600 | |
| | Set baudrate | 38400 | |
| | Set baudrate | 19200 | |
| | Set baudrate | 9600 | |
| | Query baudrate setting | ? | |
| BIN | Select binary mode | ON | <i>default</i> |
| | Select ASCII mode | OFF | |
| | Query "binary mode" status | ? | |
| CHN | Set readings to only 1 channel | 1 | |
| | Set readings to 2 channels | 2 | |
| | Set readings to 4 channels | 4 | <i>default</i> |
| | Query channel settings | ? | |
| DEC | Select offset correction | ON | |
| | De-select offset correction | OFF | <i>default</i> |
| | Query offset correction status | ? | |
| GET | Read a single snapshot | ? | |
| Gr | Read a single snapshot | | |
| HVS | Set Bias Voltage On | ON | |
| | Set Bias Voltage Off | OFF | <i>default</i> |
| | Set Bias Voltage to "value" | value | |
| | Query Bias Voltage Status | ? | |
| NAQ | Read a fixed number of samples | 1 ... 2000000000 | |
| RES | Set resolution to 16 bits | 16 | <i>default</i> |
| | Set resolution to 24 bits | 24 | |
| | Query resolution setting | ? | |
| RNG | Set Full Scale Range to $\pm 11\text{mA}$ | 0 | <i>default</i> |
| | Set Full Scale Range to $\pm 6.4\mu\text{A}$ | 1 | |
| | Set Full Scale Range to $\pm 2.5\text{nA}$ | 2 | |
| S | Stops continuous acquisition | | <i>default</i> |
| SYN\r | Synchronize internal ADCs | | |
| TRG | Enable trigger/gate input | ON | |
| | Disable trigger/gate input | OFF | <i>default</i> |
| | Query "trigger mode" status | ? | |
| VER | Query firmware version | ? | |
| ?\r | Generates on-line Help text | | |

3. Ethernet Communication

This chapter describes available communication module for the AH501B and gives hints on how to configure it.

3.1 Communication Module

The communication module is based on the Lantronix Xport® embedded Ethernet device server. To properly configure the Xport® device the user must configure the IP address, the communication protocol and all other network parameters needed by the AH501B. Please refer to the Xport® documentation and configuration software available at the Lantronix site www.lantronix.com for a complete description.

3.1.1 IP Address Assignment

The module is shipped with a default IP address as indicated on the label on the module itself. Factory settings are:

- IP address: 192.168.0.10;
- port: 10001.

Before assigning a new IP address it is required to install, on the host PC, the “DeviceInstaller” software that can be downloaded from the Lantronix website www.lantronix.com.

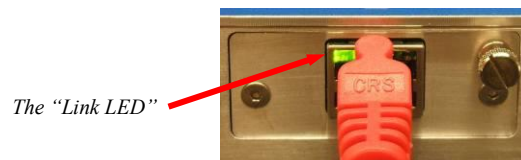
Even if the AH501B can be connected to the global LAN, a point-to-point Ethernet connection is strongly recommended in order to obtain minimum delay, maximum speed performance and to avoid possible communication problems. This implies that the host PC and the AH501B should reside on the same Ethernet subnet, i.e.:

Host PC address: 192.168.10.100 → AH501B address: 192.168.10.200

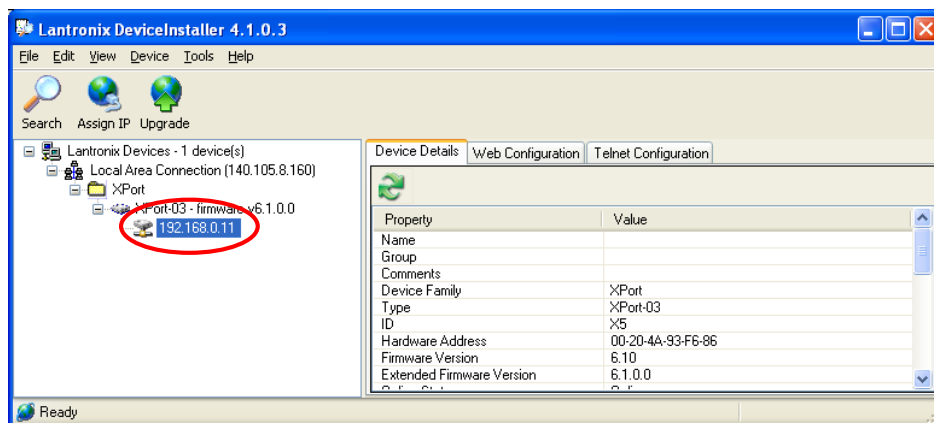
Please note that for a point-to-point direct connection a twisted Ethernet cable must be used.

The next few steps must be followed in order to assign a new IP address to the module:

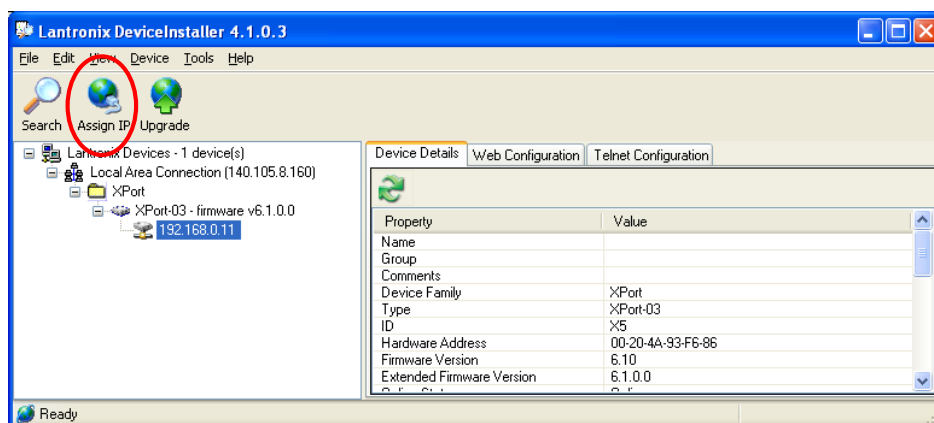
- Connect the host PC and the AH501B with a twisted Ethernet cable;
- Switch on the AH501B;
- Verify that the “Link LED” on the RJ45 connector is turned on (amber for a 10Mbps connection, or green for a 100Mbps connection) and the corresponding “Network Connection” is active on the host PC;



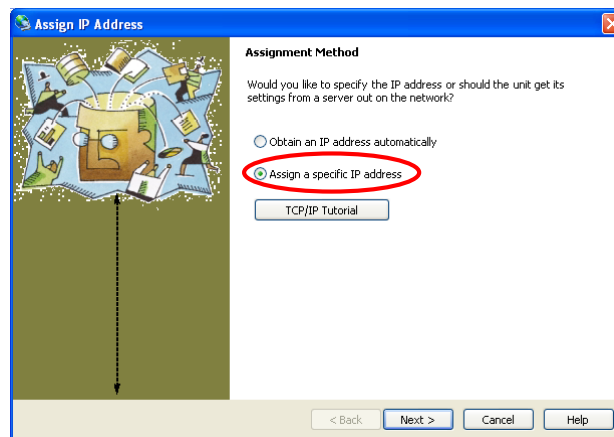
- Launch the “DeviceInstaller” program;
- Select the XPort device where you want to change the IP address;



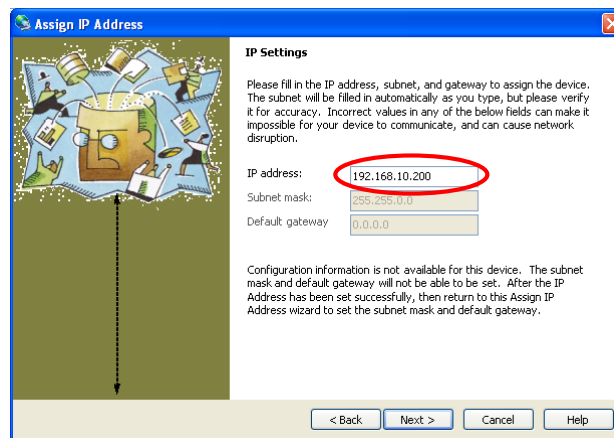
- Click on the “Assign IP” icon;



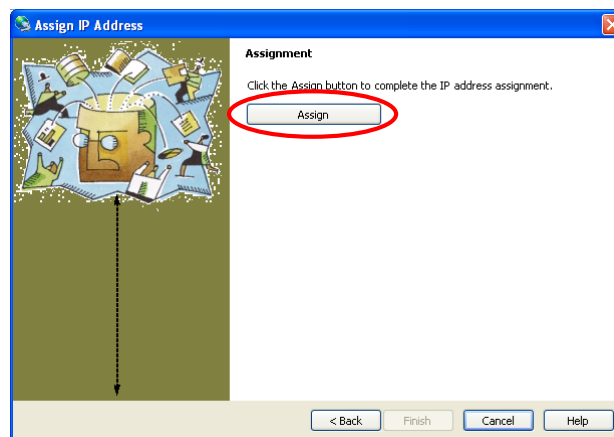
- Select “Assign a specific IP address” and then click “Next”;



- Set the “IP address”. Click “Next”;



- Click the “Assign” button;



- Wait for the assignment procedure to end, then click “Finish”

The new module IP address should now be already assigned and the success of the operation can be verified on the “DeviceInstaller” window.

3.1.2 Ethernet Module Software Configuration

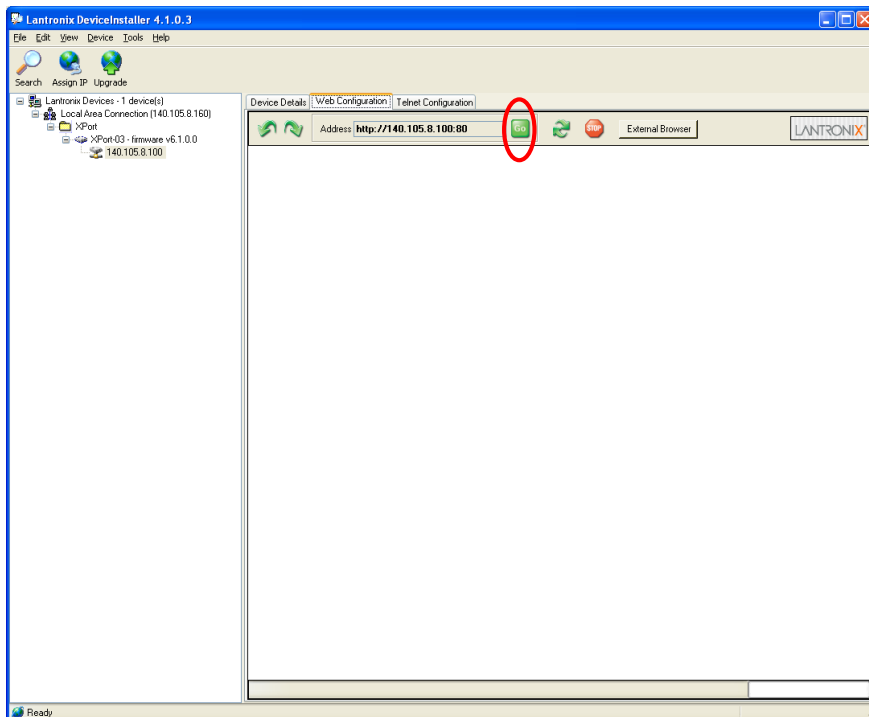
After assigning the IP address, the user must configure some other parameters on the XPort® device. There are two possible ways to configure such parameters:

- the *web server* interface;
- a *telnet* connection.

In this manual only the web interface procedure is described, if you need to configure the module using a telnet connection please refer to the XPort® user guide.

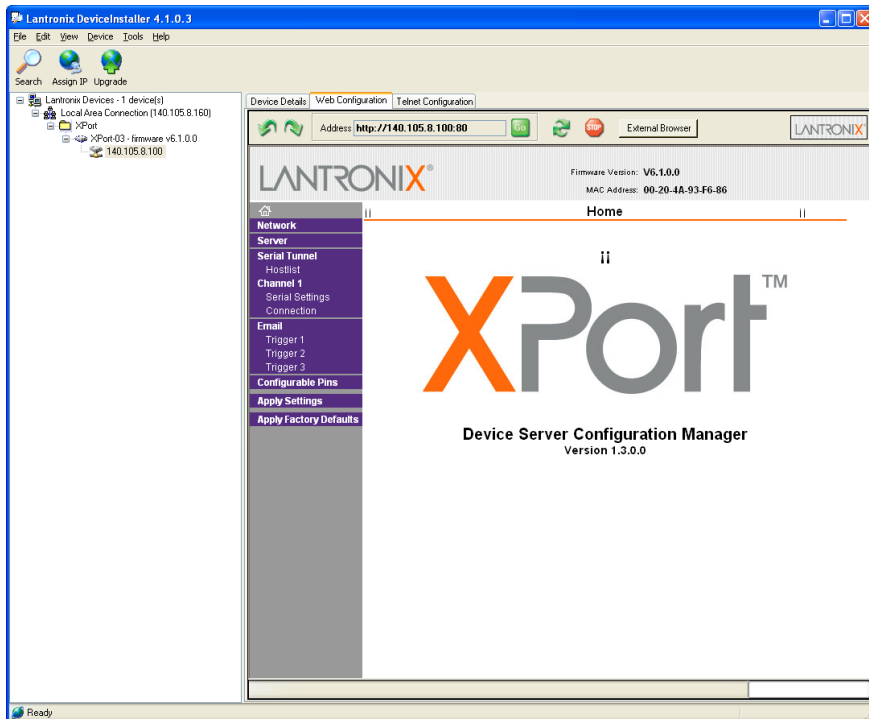
Follow the next instructions to properly setup your AH501B communication module:

- Select the “Web Configuration” tab and then click on the “Go” button. Be sure to disable the “proxy server” option in your “Internet Options” application. To do so, go to the “Control Panel” folder, open the “Internet Options”, then click on the “Connections” tab, go to the “LAN settings” and then deselect the “Use a proxy server for your LAN” option;

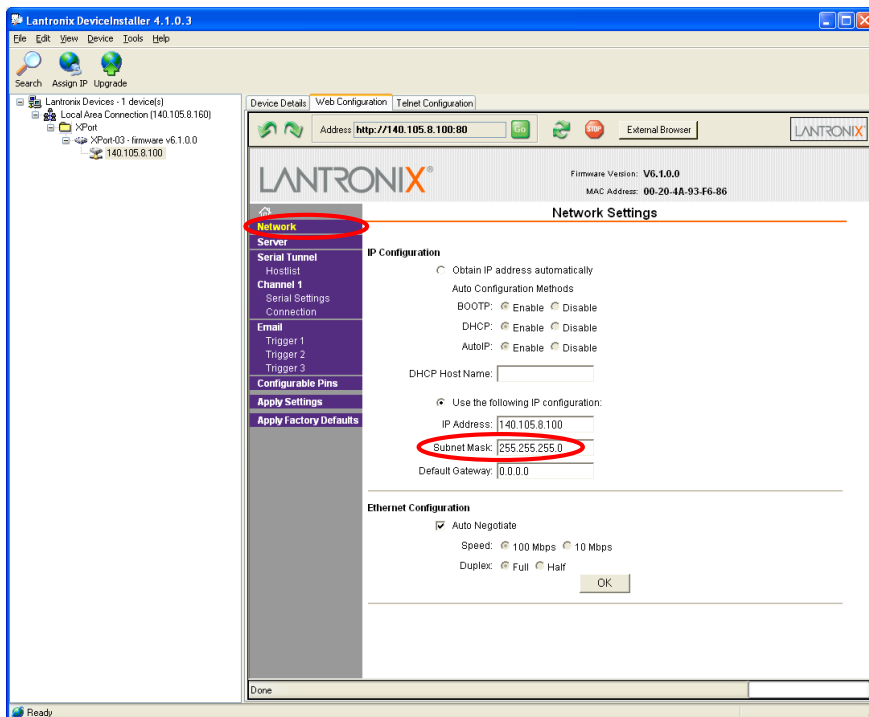


- A dialog window asking for user name and password will appear, simply click on the “OK” button;

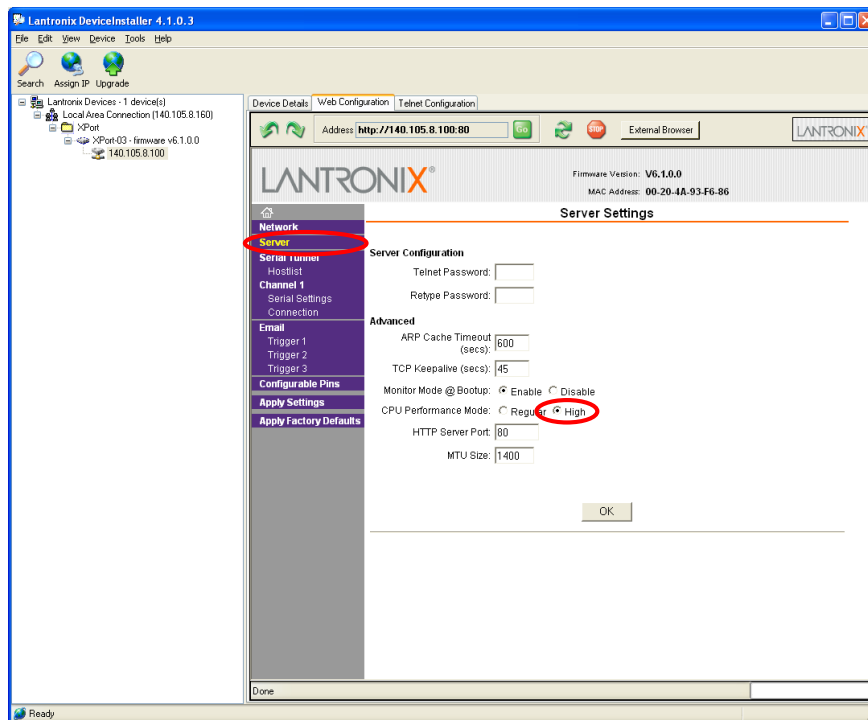
- The Lantronix web server interface will now appear:



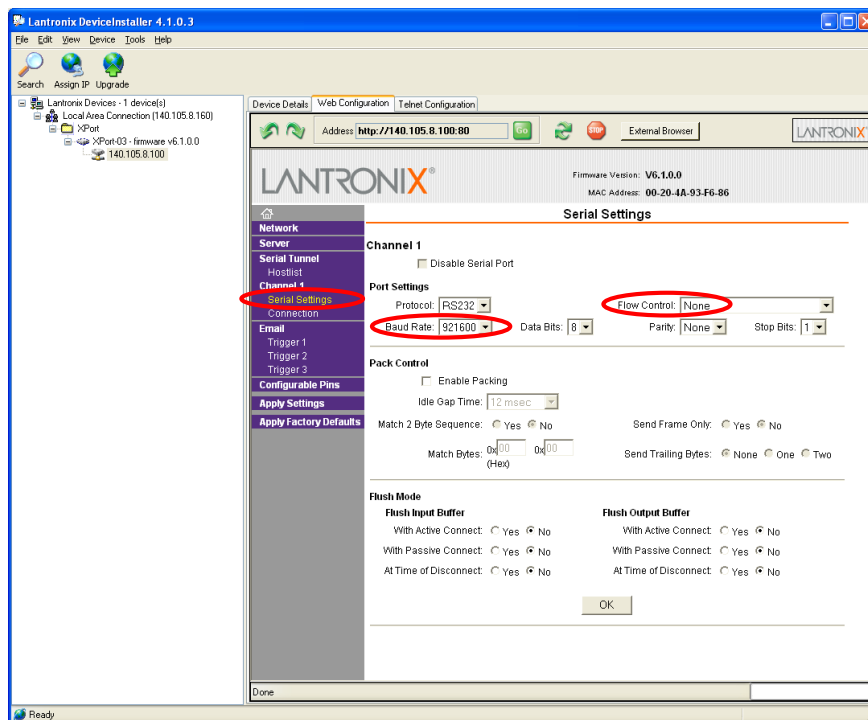
- Click on the “Network” button and set the “Subnet Mask” to “255.255.255.0”, then click on the “OK” button:



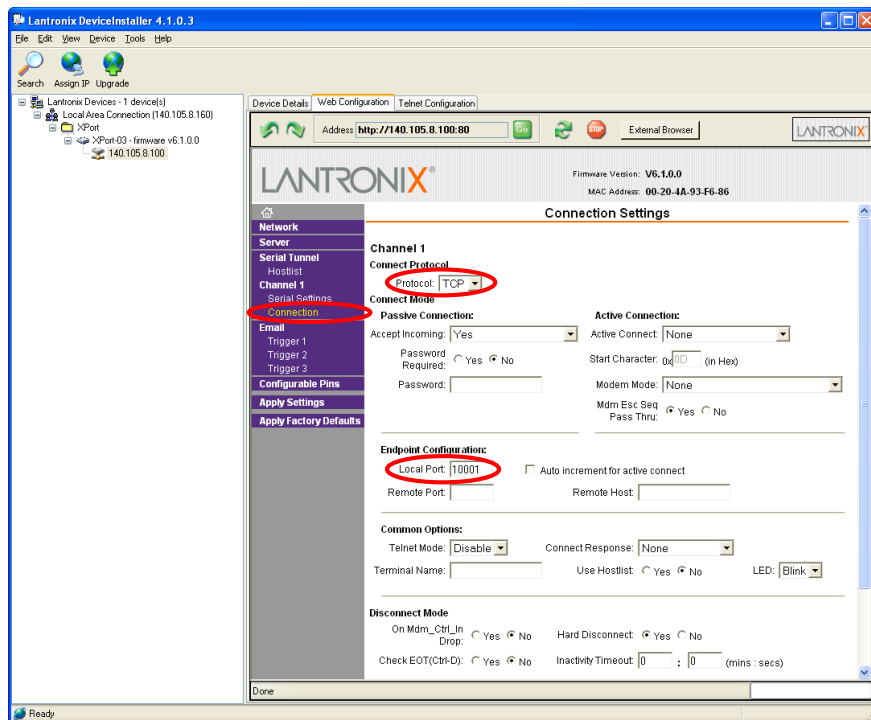
- Click on the “Server” button. Set the “CPU Performance Mode” to “High” and then click on the “OK” button:



- Click on the “Serial Settings” button. Set the “Baud Rate” to “921600” and the “Flow Control” to “None”. Click on the “OK” button:



- Click on the “Connection” button. Set the “Protocol” to “TCP” and the “Local Port” to “10001”, this value can be changed as needed. Click the “OK” button;



- Click the “Apply Settings” button.

The XPort® Ethernet device should now be correctly configured to work with the AH501B picoammeter. If you need to change any other XPort parameter, please refer to the XPort® user's guide.

4. I/O Connectors

This chapter describes the I/O connectors, their corresponding pinout and the each signal functionality.

4.1 Power Connector

The input Power Connector and the corresponding pinout are shown in Fig.4. The input voltage range goes from $\pm 6\text{V}$ up to $\pm 9\text{V}$ with a rated maximum input current of 410mA (depending on the communication module).

The connector type is a LEMO – “EPG.0B.303” series. The corresponding matching connector plug is a LEMO – “FGG.0B.303” series.

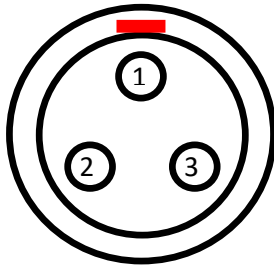


Fig. 2 - Power Connector

| Pin | Signal |
|-----|------------------|
| 1 | GND |
| 2 | -V _{CC} |
| 3 | +V _{CC} |

4.2 I/O Connectors

The I/O interface signals (gate/trigger) are available on SMA-type connectors. The signal levels are 5V TTL and CMOS compatible. The maximum output current is 25mA (or a 200 Ω load).

4.2.1 The TRIGGER OUT Signal

The TRIGGER OUT signal is a 5V TTL-, CMOS-compatible signal toggling at every ADC conversion cycle and it can be used as a synchronization signal for external devices or just to monitor the module internal conversion timing.

This pin is driven by an output buffer that is capable of driving loads down to 150 Ω ($V_{OH} = 0.25\text{V}$, $V_{OL} = 4.2\text{V}$).

4.2.2 The TRIGGER/GATE Input Signal

The presence of the TRIGGER/GATE input signal leaves to the user a chance to synchronize the acquisition of the AH501B with an external event (e.g. laser pulses). A leading edge signal on the TRIGGER/GATE causes the acquisition of the picoammeter to start and the trailing edge of the same signal causes it to stop. The acquisition process continues as long as the signal is kept at the high voltage level ($V_{IH} = 3.8V$); as soon as the TRIGGER/GATE signal crosses the logic low level threshold ($V_{IL} = 1.2V$) the acquisition stops and no data is being sent to the host. This feature allows the user to receive only data related to a hardware-determined time window.

The input voltage high level is 5V TTL and CMOS compatible.

5. Technical Specifications

| | |
|--|-----------------------------------|
| Input Channels | 4 |
| Current Measuring Range | from ± 2.5 nA to ± 2.5 mA |
| Current Polarity | bipolar |
| Data rate | up to 26 ksamples/s |
| Resolution Bits | 16 or 24 |
| Noise (@RNG2, $C_{IN} = 5$ pF) | < 250 fA (typ.) |
| Communication | Ethernet TCP/IP and UDP |
| I/O Signal | TRIGGER/GATE input, TRIGGER OUT |
| Supply Voltage | from ± 6 V to ± 9 V |
| Bias Voltage Output | 0 to 30V |
| Voltage Monitors | Yes (± 5 V) |
| Dimensions | 160 × 108 × 45 mm |
| Weight | 500 g |
| Input Connectors | BNC |
| Voltage Monitor Connectors | SMA |
| Communication Interface | Ethernet 10/100 TCP-IP or UDP |