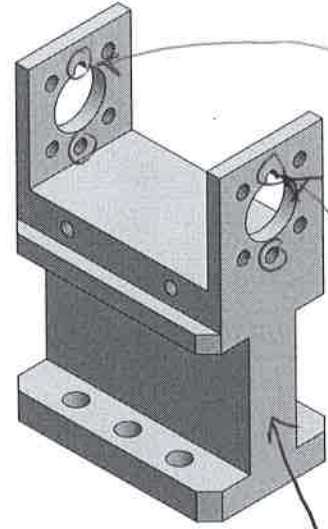
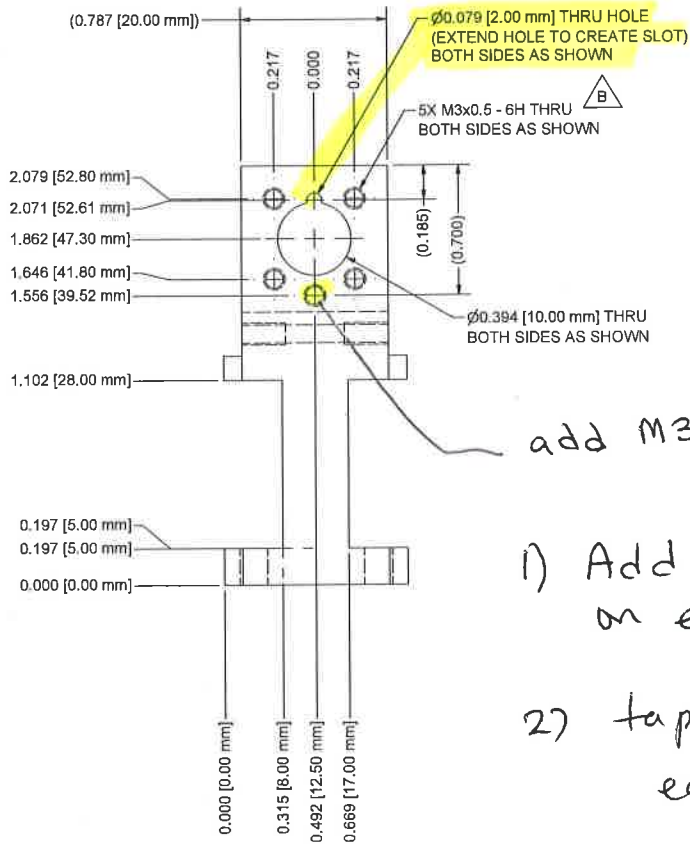


2.5mm X 45° CHAMFER

PART IS SYMMETRIC ABOUT THIS PLANE

AT OTHER A



ignore different shape

add M3x<sup>0.5</sup> tapped through

1) Add 2mm hole as shown on each faces

2) tapped M3 x 0.5mm on each faces

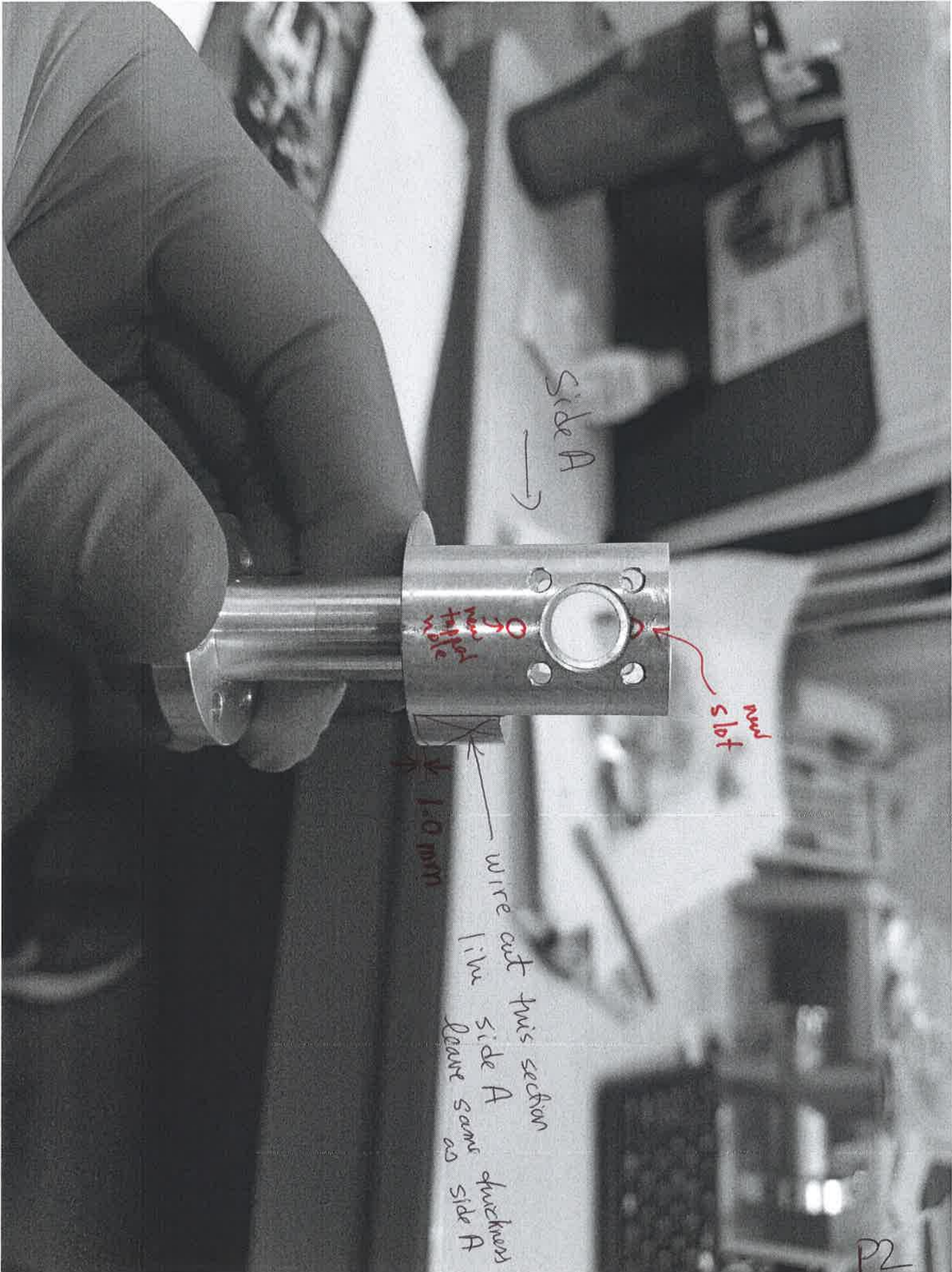
Eric Dufresne 2-0274 dufresne@anl.gov  
Add to existing job, FMS0036642

49 THRU LOWER FLANGE AS SHOWN

B	MVF		1-29-15	ADDED 5TH HOLE TO BOLT PATTERN, ADDE 2 mm THRU HOLE
A	MVF		10/9/14	ADDED NOTE TO 3 SURFACES
CHANGE LETTER	CHGD BY	CHWD BY	DATE	CHANGE

 <small>ANSI Y14.5-2009 APPLIES</small> <small>EXCEPT AS NOTED, UNITS ARE: INCHES</small> <small>SURFACE FINISH 125</small> <small>FINISH: 3 PLACE DECIMAL ± 0.005</small> <small>2 PLACE DECIMAL ± 0.015</small> <small>1 PL DEC, FRAC: ± 0.030, 1/32</small> <small>ANGULAR TOL'S ± 0.5</small>	<small>DRAWN: MVF</small> <small>CHKD:</small> <small>APPRD:</small>	<small>MATERIAL: Aluminum 6061</small> <small>SIMILAR TO:</small> <small>APS 8-ID-INSTRUMENTATION</small>	<small>ESTIMATED MASS: NA</small>
	<small>SHEET: 1 OF 1</small>	<small>LENSE HOLDER MAIN BODY</small>	<b>ARGONNE</b> ADVANCED PHOTON SOURCE <small>NATIONAL LABS</small>
<small>SCALE 2:1</small>	<small>FIRST USED ON</small> <b>8-ID-I-204</b>	<small>DWG NO</small> <b>8-ID-I-205</b>	<small>SIZE</small> D <small>REV</small> B
	<small>DATE</small> 3/26/2014		

P1



Side A  
→

new slot

new hole

wire cut this section  
side A  
leave same as side A  
1.0 mm

P2

FMS0036642

Eric Dufresne P2

SUBJECT

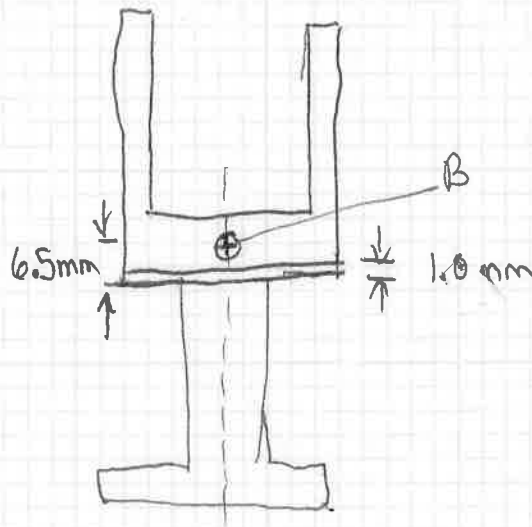
Eric Dufresne dufresne@anl.gov

NAME E. Dufresne

DATE 1/14/2019

REV. DATE 1

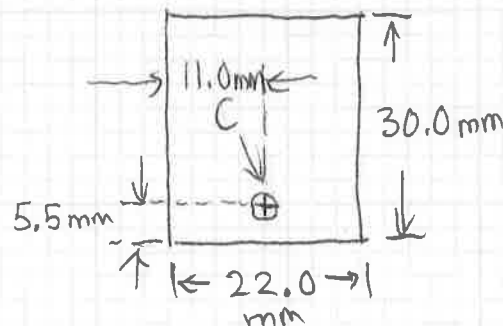
Drill one 1 cm deep M3 hole (B)  
tapped 6 mm deep after  
wire cutting piece to match  
side A on picture.



90° side view  
from picture.

Make small plate (Al) 1.0 mm thick (1)

22 x 30 mm x 1mm  
with through hole C  
as shown.



Add to FMS0036642

P3

SUBJECT

Eric Dufresne X0274

NAME E. Dufresne

DATE 1/14/2019

REV. DATE

Machine / cut

(2) SS 1/4" stock rod  
to 21.5 mm length



Add to FMS 0036642 - Dufresne.

(P4)